

HAIR LOSS, A GROWING CONCERN

It's normal to lose between 50-100 hairs a day, according to the American Academy of Dermatology. If you start noticing sudden or excessive hair loss, that could be a warning sign.

Hair loss represents an unwanted and stressful experience for both men and women. This can be psychologically distressing, and significantly affecting their quality of life¹. The American Hair Loss Association estimated that more than 80 million men and women are suffering from hair loss concerns in the US².

There are several warning signs that you might be starting to experience hair loss (or have been losing hair for quite some time):

1. a change in your hairline
2. noticeable thinning of your hair
3. excessive hair loss after showering or brushing

TRY ALMA TED

Experience the latest in hair treatment technology with Alma TED.

Speak to your Alma TED practitioner today!

NO DISCOMFORT

NO TRAUMA

NO SHEDDING



Introducing a new hair treatment
for men and women

Alma TED

Class 1 medical device. Pending 510K clearance.*

©2022 Alma Lasers Inc. All rights reserved. Alma, its logos are trademarks or registered trademarks of Alma, Inc. Product specifications are subject to change without notice. ATD-B2C Patient Brochure-041422. Photos courtesy of Lady Dy, MD, S. Desai, MD

Alma TED

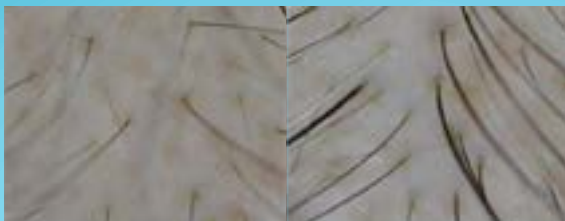
¹ Journal of the American Academy of Dermatology, Cash et al, Vol 29, Number 4, 568-575
² <https://www.yahoo.com/now/hair-loss-treatment-products-market-105400356.html>

WHY ALMA TED?

Alma TED is a revolutionary, non-invasive treatment. When used with a topical Hair Care Formula, it promotes improved blood flow to the scalp which results in thicker, stronger hair. It offers these benefits without the discomfort and shedding often experienced with other in-office hair treatments and procedures.

WHAT IS ALMA TED?

Alma TED is an ultrasound-based system that leverages acoustic sound waves to address a wide range of aesthetic applications that would benefit from improved blood flow. Our TED+ Hair Care Formula contains essential ingredients that conjunctively support optimal hair and scalp health and follicular strength. When paired with the TED+ Hair Care Formula, Alma TED helps improve the appearance of hair resulting in thicker, fuller-looking hair with increased shine and strength.



BEFORE

1 MONTH AFTER 3 TXS

+44% in hair thickness

WHAT SHOULD I EXPECT?

Alma TED is a quick, 20–25 minute treatment. During your consultation, your practitioner will assess your scalp to personalize the best treatment for you. You'll notice improvements as early as one month following your first treatment, but additional treatments may be recommended for optimal results.

IS THE TREATMENT PAINFUL?

No, the treatment should not be painful. You can expect to feel a warm sensation from the device and a ringing sound through the course of the treatment, but there is no pain involved. No Needles. No Discomfort. No Trauma to the Scalp.

HOW SOON CAN I EXPECT TO SEE RESULTS?

You can expect to see minor results after one treatment, but it is recommended to have at least three treatments, one month apart, for optimal results.

WHO IS A GOOD CANDIDATE FOR ALMA TED?

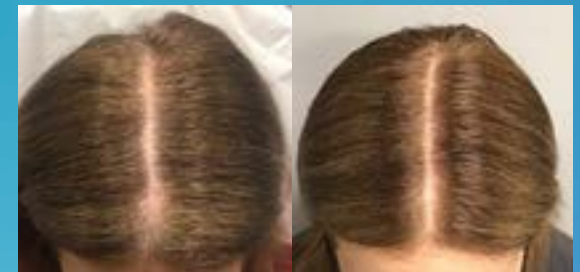
Alma TED was developed to be used on any individual that is suffering from hair loss or that wants to improve the overall thickness and appearance of their hair.

Speak to your practitioner to discuss the best treatment plan for you.



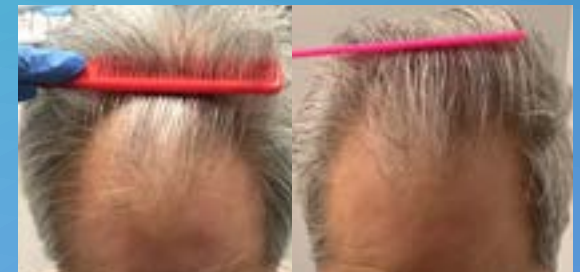
BEFORE

AFTER 4 TXS



BEFORE

AFTER 1 TXS



BEFORE

AFTER 4 TXS



BEFORE

AFTER 2 TXS